

THE CDC CORNER

OUR MISSION

Providing supports and services to children, families and individuals with disabilities while addressing the health and well-being of all persons in the communities in which we serve.

LEAD



SOCIAL MEDIA SPOTLIGHT

Check out our Facebook and Instagram to see how fabulous our Leadership Team is! This May our Executive Director, Program Managers, Accounting Manager, and Human Resources Manager spent two days working on strategic planning and leadership training in the Gatlinburg area. We may be biased, but we think the Community Development Center has the best team of leaders!

HOLIDAYS

AUGUST 17	NATIONAL NONPROFIT DAY
AUGUST 21	NATIONAL SENIOR CITIZENS DAY
SEPTEMBER	FETAL ALCOHOL SPECTRUM SYNDROME AWARENESS MONTH
SEPTEMBER 21	WORLD ALZHEIMER'S DAY
OCTOBER 6	WORLD CEREBRAL PALSY DAY
OCTOBER 10	WORLD MENTAL HEALTH DAY

ENABLING TECHNOLOGY SUCCESS STORY

One of the Community Development Center's Independent Support Coordinators, Jayme, works one-on-one with a client who recently acquired a particularly furry piece of Enabling Technology. Deborah now has a "fur"-tual cat named Oreo! When asking Deborah what she likes about having Oreo, she shared with Jayme that having Oreo gives her a sense of responsibility without having to feed, clean up, or bathe him. She enjoys being able to have a virtual pet that is low maintenance! To learn more about Enabling Technology, please visit www.tn.gov/disability-and-aging.

Local Happenings

Bedford County:

Tennessee Walking Horse National Celebration | 9am - 7pm on Wednesday, August 21st - Saturday, August 31st
at 1110 N Evans Street, Shelbyville, TN 37160



Coffee County:

Manchester Old Timers Day | 9am - 5pm on Saturday, October 5th
at Historic Downtown Manchester, Manchester, TN 37355

Davidson County:

Watermelon Festival | 10am - 2pm on Saturday, August 24th
at Nashville Farmer's Market, 900 Rosa L. Parks Boulevard, Nashville, TN 37208

Franklin County:

Fall Festival at Tims Ford State Park | Saturday, October 5th
at Tims Ford State Park, 1561 Phillip Fulmer Parkway, Winchester, TN 37398

Giles County:

Here's the Beef Ag Week | Monday, August 5th - Saturday, August 10th
at 2014 Elkton Pike, Pulaski, TN 38478



Hickman County:

National Banana Pudding Festival | 9am - 6pm on Saturday, October 5th & 12pm - 5pm on Sunday, October 6th
at The Hickman County Ag Pavilion, 979 Grinders Switch Road, Centerville, TN 37033

Lawrence County:

Middle Tennessee District Fair | Thursday, September 19th - Saturday, September 28th
at Lawrenceburg Rotary Park, 927 North Military Avenue, Lawrenceburg, TN 38464



Lewis County:

South Central Area Fair | Wednesday, September 11th - Saturday, September 14th
at 115 Smith Avenue, Hohenwald, TN 38462



Lincoln County:

Lincoln County Fair | Friday, September 16th - Saturday, September 21st
at 1003 Hedgemont Avenue, Fayetteville, TN 37334

Marshall County:

Goats, Music, & More Fair | 9am on Friday, October 11th & Saturday, October 12th
at Rock Creek Park, 101 Old Farmington Road, Lewisburg, TN 37091

Maury County:

Whole Hog Festival | Saturday, October 5th
at Oaklawn Mansion, 3331 Denning Lane, Spring Hill, TN 37174

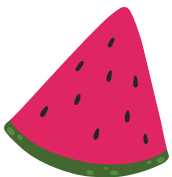


Moore County:

Jack Daniel's Invitational Barbecue | Friday, October 11th & Saturday, October 12th
at Historic Lynchburg Square & Wiseman Park, Wiseman Park Road, Lynchburg, TN 37352

Rutherford County:

3rd Annual Peach Cobbler Festival | 9am - 4pm on Saturday, August 10th
at Lane Agri-Park, 315 John R. Rice Boulevard, Murfreesboro, TN 37129



Williamson County:

39th Annual PumpkinFest | 10am - 6pm on Saturday, October 26th
at 106 3rd Avenue North, Franklin, Tennessee 37064

Around the Office

26th Annual Helping Hands Golf Classic

What a beautiful day for golf! Over 20 teams joined the Community Development Center on the greens of Saddle Creek Golf Club in Lewisburg, TN on May 9th for the 26th Annual Helping Hands Golf Classic. Thank you to our Corporate Sponsor, WM, for once again helping make this truly spectacular event possible! Our heartfelt gratitude and appreciation goes out to the sponsors, teams, and volunteers who contributed to the benefit of the Marshall County Child Development Center and Children's Center for Autism.



THANK YOU TO OUR 2024 SPONSORS!



Early Intervention

**NEW
UPDATE**

**Breaking
News!**

**EXCITING
NEWS**

The Department of Disability and Aging officially became the newest cabinet-level state agency on Monday, July 1, 2024.

Gov. Bill Lee signed the Disability and Aging Act into law in April, which merged the Department of Intellectual and Developmental Disabilities (DIDD) with the Tennessee Commission on Aging and Disability (TCAD). The new department is responsible for the oversight of services and supports to more than 1.5 million older adults and Tennesseans with disabilities.

The new department provides services to thousands of people across Tennessee through a variety of programs for both older adults and people of all ages with disabilities. These services include:

- Tennessee Early Intervention System (TEIS) for children ages birth through age 5
- Part B of the Katie Beckett Program for children with intellectual and developmental disabilities under the age of 18
- Home and Community Based Services through Medicaid Waivers for people with intellectual disabilities and the OPTIONS program for older adults and adults with physical disabilities
- Nutrition Services and Medicare Benefits Counseling for older adults through the state's nine area agencies on aging and disability (AAAD)
- Family Support Program
- Medicaid Alternative Pathways to Independence (MAPS)
- Long Term Care Ombudsman

Source: [tn.gov](https://www.tn.gov)



Congratulations to our extraordinary Early Interventionist, Ms. Bethany, who gave birth this July to a beautiful, healthy baby girl!



The Children's Center for Autism



CCA staff and clients sure have been enjoying the summer so far!



Marshall County CCA is extremely grateful for the generous donation from Middle TN Classic Horse Auction!

SMART GOALS ARE...

- **Specific** - They clearly define the goal (in ABA, this would be the behavior or skill targeted for intervention)
- **Measurable** - They quantify the targeted skill or behavior so that it can be measured; the targeted skill can be assessed in terms of degree or extent of progress.
- **Attainable** - The goal specifies who will accomplish the target for change.
- **Realistic** - They include a focus on what can realistically be accomplished; what is likely to be achieved based upon current resources and possible outcomes.
- **Time-Bound** - They include a duration of time that it is expected to take to accomplish the target skill or behavior.



Looking to help support the CCA program?

Here is a list of possible donation items that CCA uses on a daily basis to help support our kids:

Laminating Paper - Velcro - Multi Colored Construction Paper - Glue - Washable Paint - Sensory Bin items like: dry rice, dry beans, dry pasta, playdoh, cornstarch, bubble wrap, sand, colorful fish rocks, etc.



Independent Support

Coordination/TN Strong Families

A New Home for Susan



Susan has moved into her new home! She and her family are excited about this next adventure for her. They have proven remarkable resilience in the face of challenges. Susan is a bright light that always lights up the room with her smile.

We are proud for her to be a part of the community and look forward to supporting her throughout her journey.

Summer Vacation Getaway



Bradley Gower and his long-time staff member, Judy, went on a summer vacation trip to the beach in Gulf Shores, Alabama! Bradley is a hard worker and was able to save his money that he earned from working at his job in Columbia, TN.



Family Support



Family Support Local Council: Meeting Families Where They Are in Life

The Family Support Program is designed to offer financial assistance for support services to families caring for a family member with a disability. For many years, the maximum amount an individual can receive from the Community Development Center Family Support Program is \$1,200. However, this doesn't mean everyone who receives funding is necessarily allocated this amount. Allocations vary depending on the needs of the applicant and the amount of funding available in the county where the applicant lives. The Local Council set this cap, lowering it from the State's maximum amount allowable of \$6,000, in hopes of serving more families, and it worked! Each year, the CDC serves approximately 220 individuals through the Family Support Program. The Local Council is in favor of serving as many families as possible. Still, at the same time, they recognize there are instances when caring for a family member with a disability can mean extraordinary costs - a needed piece of equipment that insurance won't cover, a bathroom that needs to be modified for accessibility, or a medical procedure with a large copay. Family Support recipients are very thankful for any assistance they can get - every little bit helps, but the Council wanted to be able to help a little more under special circumstances - "meet families where they are in life," as described by one council member. So, the Council set out last fiscal year to modify its priorities for operating the Family Support Program to include the opportunity for families to apply for additional funding under special circumstances and for a specific need, up to the maximum amount allowed by the State. This new priority was approved by the District Council and went into effect on July 1, 2024. The Local Council is excited about this opportunity to offer families additional support.



Purses for a Purpose



The Family Support Program held its inaugural fundraising event... "Purses for a Purpose", a purse sale, featuring gently used purses, bags, billfolds, and food trucks! The event, held in early June in Shelbyville, raised more than \$2,700!

Family Support thanks the International House of Prayer for being the sale location for the more than 390 donated items, everyone who searched their closets and donated purses, and the area shops that gave new purses to sell - Meshed of Winchester, Wisteria Hill Boutique of Manchester, Whiskey Rose of Fayetteville, and Bedford Farmer's Co-op, New Covenant Christian Bookstore, J. Jordan Boutique, JW Boutique, and The Pomegranate Shoppe, all of Shelbyville. We also thank the food truck vendors Bailey Smokes, Las Casitas, Skins & Nuts, and everyone who bought a purse!

We've already begun making plans for the next "Purses for a Purpose" sale!!



Employment Services

SUCCESS STORY

The Employment Services program has had a busy year! In the 2023 - 2024 school year, Employment Services provided Pre-Employment Transition Services to 131 students across 15 schools in 8 counties.

The MAPs program has continued to expand and grow, with the Employment Services program now providing services to 14 individuals.

The MAPs program is serving participants in Bedford, Coffee, Franklin, Giles, Lawrence, Lincoln, and Maury counties.



The Employment Services program began working with Carl in March 2024, after he had re-entered Vocational Rehabilitation services. Carl had previously been placed as a Substitute teacher in Lincoln County, but he was interested in finding full-time work in the Murfreesboro area. The ES team assisted Carl with creating an updated resume, preparing for job interviews, and completing applications - specifically an application to work as a custodian at MTSU. After his interview with MTSU, Carl was offered a full-time position as a custodian at the end of April. He has been successfully working at MTSU for over two months now. He is enjoying the work and is happy with his position!



The Employment Services program hosted the Giles County Summer Transition Camp in Pulaski during the month of June! During the summer camp, Pre-ETS students in Giles County were able to learn about employment skills and tour local businesses and post-secondary options in their community.

Michelle Armstrong, an Employment Specialist with the CDC, completed her ACRE certification training in May. With her ACRE certification, Michelle is now able to provide additional services through ECF Choices. Congratulations, Michelle!

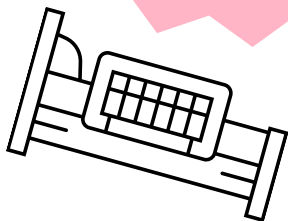


Senior Equipment Loan

BEDSIDE RAIL

Potential benefits of bed rails include:

- Aiding in turning and repositioning within the bed.
- Providing a hand-hold for getting into or out of bed.
- Providing a feeling of comfort and security.
- Reducing the risk of patients falling out of bed when being transported.
- Providing easy access to bed controls and personal care items



Between 1985 and January 1, 2009, 803 incidents of patients* caught, trapped, entangled, or strangled in beds with rails were reported to the U.S. Food and Drug Administration.

Most toilets are lower than a chair, which often causes unnecessary difficulties for people with mobility issues. Elevated toilet seats solve this problem by raising the height of the toilet and even providing hand bars in some cases.

TOILET SEAT ELEVATOR

A raised toilet seat is a small piece of equipment that goes on top of a toilet bowl to increase its height. They are usually used by people who may have trouble sitting down in seats that are as low as a toilet, such as older people. Toilet seat risers come in various heights, but most range from 2 to 6 inches.



Welcome to the Team!

Grace Boothe
Tayhana Alexander
Lesley Seado
Tela Warren
Tyler Nicholson
Wendy Walleman

Early Intervention
Early Intervention
Independent Support Coordination
Early Intervention
Early Intervention
Lincoln CCA

May 13
June 3
June 17
June 17
July 15
July 22

Staff Spotlight

Learn all about ABA Supervisor for Marshall CCA, Teah Obeidalla!

1. What made you choose this particular career?

I took a behavior modification class in college and learned about applied behavior analysis for the first time. I fell in love with it and knew that was the path I wanted to continue on.

2. What's one thing that you've crossed off your bucket list? What's one thing on your bucket list that you haven't crossed off yet?

Traveling is probably the number one thing on my bucket list. The countries I have already visited are Jordan, Italy, Greece, Turkey, Canada, England, and Mexico. There are so many more I would love to visit! Top for me right now would be Scotland though!

3. What was your favorite book to read/movie to watch during your childhood?

I loved anything Mary-Kate and Ashley Olsen were apart of. I still regularly quote lines from their movies.

4. What is one thing that you wish people knew about your job?

How rewarding it is getting to see our kiddos grow.

5. What advice would you give to someone who wants to enter your job position?

Don't be afraid to ask questions. You are not going to know all the answers and that is okay. Collaboration is key!

6. What has been one of the most important lesson you've learned throughout your career?

I've learned the value in not giving up. It doesn't matter how long it takes you to get there, what matters is that you achieve your goal and didn't quit.



Haley Anthony	August 8
Sarah Martin	August 8
Jennifer Rutka	August 8
Michelle Armstrong	August 18
Teresa Winnette	August 28
Makayla Jordan	August 28
Britney McConnell	August 30
Rose Tomlin	September 3
Tabatha Norton	September 7
Hailey Good	September 10
Madelyn Hicks	September 14
Lindsay Rose	September 18
Sheri Vaughn	September 20
Becky Jamison	October 3
Lesley Seado	October 10
Tiffany Ward	October 18
Bethany Mize	October 24
Grace Boothe	October 30

NEW! Read All About It!

TN Seating & Positioning Clinic

Shoutout to the TN Seating & Positioning Clinic! Did you know that DDA operates three seating and positioning clinics in Tennessee, located in Arlington, Nashville, and Greeneville? Physical and occupational therapists with specialized expertise in evaluating complex seating and positioning needs provide comprehensive evaluations and support to prioritize needs. Each clinic has an associated manufacturing shop where staff with extensive experience in the areas of construction, carpentry, upholstery, and electronics, fabricate equipment to meet individualized needs.

Did You Know?



Know an individual with a disability? The Tennessee Developmental Disabilities (TNDD) Network has partnered to carry out a statewide community needs assessment. This survey will help organizations understand the needs of the disability community across our state. Scan the QR code to take the TN Developmental Disability Survey today!

Contact Us

Children's Center for Autism: (931) 684-2293
 Early Intervention: (931) 684-9203
 Employment Services: (931) 684-4269
 Family Support: (931) 684-7673
 Independent Support Coordination: (931) 680-0094
 Main Office: (931) 684-8681

HAPPY Anniversary DAY

August

Monica Robinson	Early Intervention	2 years
Amiey Bisig	Marshall CCA	1 year
Bethany Mize	Early Intervention	2 years
Shena Tomlin	Marshall CCA	1 year
Leslie Throneberry	Early Intervention	19 years

September

Rose Tomlin	Marshall CCA	2 years
Madelyn Hicks	Marshall CCA	5 years
Makayla Jordan	Bedford CCA	1 year

October

Amanda Kellar	Early Intervention	2 years
Melissa Cole	Independent Support Coordination	3 years
Lucy Fletcher	Bedford CCA	6 years
Lisa Fields	Early Intervention	2 years
Brooke Hickman	Early Intervention	1 year
Catherine Emerson	Administration	2 years
Allison Crouch	Bedford CCA	1 year
Chastity Crowe	Early Intervention	2 years



Community Rewards Program



<http://www.cdctn.org>



<https://www.instagram.com/communitydevelopmentcenter/>



<http://givingmatters.civicore.org>



<https://www.facebook.com/CommunityDevelopmentCenter>



Community Development Center Foundation